



Headquarter

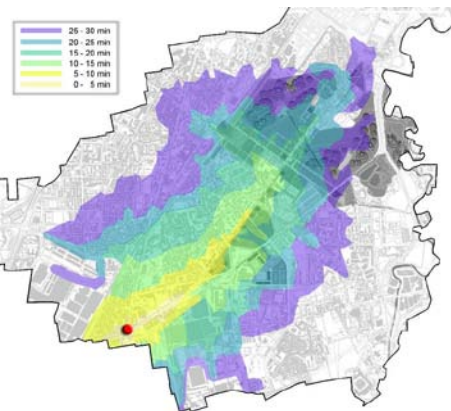
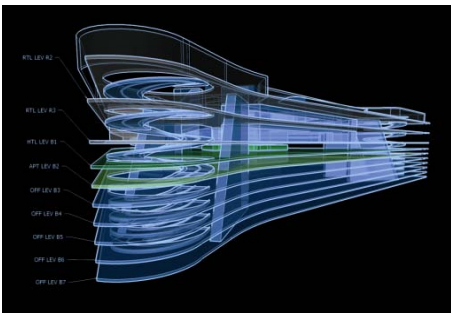
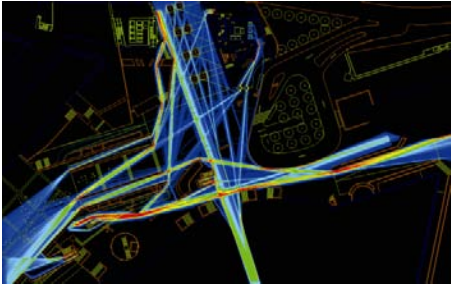
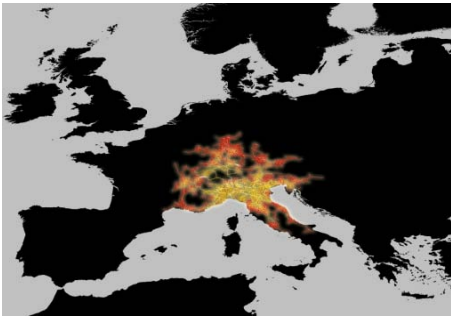
MILANO

via Lovanio, 8 20121
tel. +39 / 02 623 119 1
fax +39 / 02 623 119 50
milano@systematica.net

Others Offices

CAGLIARI

via Solmi, 45 09129
tel. +39 / 070 275 939
fax +39 / 02 275 23 81
cagliari@systematica.net



Systematica, an engineering and architectural consulting firm specialized in **Town & Transport Planning**, with offices in Milan, Cagliari and Venice, was established in 1989.

Endowed with a high profile Scientific Advisory Committee, Systematica operates in Italy and abroad, particularly in geographical areas characterised by strong levels of economic and demographic growth, such as those in the Mediterranean basin, North Africa, The United Arab Emirates, South America, Russia and the Far East.

Systematica studies, plans and designs infrastructure and transport systems at all levels, ranging from regional to urban and development scale. In particular, the company addresses urban transformation on a medium and large scale, the implementation of intermodal nodes and complex building structures ensuring adequate levels of sustainability and multi-modal accessibility, as well as the requalification of urban public realms and large urban districts.

Systematica guarantees to its Clients quality and competence as strategic advisor in the services of consulting, planning and design.

The **consulting services** cover the following sectors:

regional and urban planning, transport planning supported with the latest generation of highly sophisticated simulation codes and mathematical models as well as specific and tailored analysis of socio-economic impacts induced by large infrastructural projects.

Demand analysis, feasibility studies, accessibility verification and market studies constitute the preliminary phase of the planning and design of large-scale projects, providing robust and extensive analytical framework to support the decision-making process in several dimensions of activity which involve Public Administration, private interests as well as local communities.

The **planning services** allow the definition of methods, lines of development and guidelines aimed at the organization and the physical transformation of both territory and urban space, as well as enabling the development of appropriate political policies for land and transport management. This activity is further focused on masterplanning, mobility plans, transport and traffic planning, security and logistics as well as on the functional assessment of infrastructures and transport systems.

The **design services** follow up and integrate the consulting and planning services, thanks to the processing of cross-cutting solution in different areas, ranging from urban plans to urban design.

This service is developed at the preliminary-concept design, scheme design and detailed design stages and relates to road infrastructures, intermodal terminals and urban interchange nodes, railway stations, port and airport land side zones, large car parks and complex real estate development and redevelopment Projects. Common factors in these three areas, within an overall vision of the city and the territory, are environmental sustainability, accessibility and urban quality as a guarantee of better life.